

BOARD MEETING DATE: February 17, 2026

ITEM NO: VIII-B

RECOMMEND THAT .

Informational Item Only

THIS RECOMMENDATION .

# Alumni in Action

Networking & Career Exploration

**FEB. 19**  
**5-6 PM**

**Student Center**  
**Lakeside Room**

## From Sentinels to Success: Then ➤ Now ➤ Next

### What to Expect

- Hear real alumni stories — from student to workforce
- Learn how NFC prepared Sentinels for life after graduation
- See how alumni stay connected and continue to give back

### Event Highlights

- Alumni panel sharing career journeys
- Digital Sentinels to Success showcase
- Light refreshments & conversation



**NORTH FLORIDA  
COLLEGE**

---

INFO: Melanie Morgan  
(850) 973-9434 | [morganm@nfc.edu](mailto:morganm@nfc.edu)

*Hosted in partnership with  
NFC Foundation • Career & Transfer • Student Life*



# STEP IN / STAND OUT!



## Collect Steps Earn Perks

# SCAN. STEP. STAND OUT

This spring, getting involved pays off—literally.

At every NFC event, look for the Sentinel Engagement QR Code.

- ✓ Scan it
- ✓ Select the event you're attending
- ✓ Earn your entry to win awesome prizes like:

- Gas cards
- Sentinel Café gift certificates
- NFC Sentinel Store swag



The more you participate, the more chances you have to win. Each scan is time-stamped, so only current events count—and you can only scan once per event.

Your path to engagement, wellness, workforce, and community begins here.

### SENTINEL SUNRISE SOCIAL

JAN. 6 | 8-10 AM

- Breakfast-in-a-Cup Bar
- Coffee + Seasonal Flavors
- Student Zones to help you throughout the Semester
- Giveaways & more!

STUDENT CENTER + SENTINEL CAFE

### STEP IN, STAND OUT!

JAN. 7 | 11 AM-1 PM

- Chili & Toppings Bar
- Student Zones to help you throughout the Semester
- Giveaways & more!

STUDENT CENTER + SENTINEL CAFE

### club RUSH

11 AM - 1 PM  
STUDENT CENTER

WEDNESDAY 01-21-26

CHOOSE YOUR OWN ADVENTURE MAP! FREE LUNCH & PRIZES

### OPEN HOUSE 2026

FEBRUARY 7

FREE APPLICATION DAY

Chance to Win a \$1,000 Scholarship

9-11 AM | NFC Madison, FL

### SGA ADVOCACY CONFERENCE

FEB. 9-11

TALLAHASSEE, FL

### RECRUITING ON WHEELS

## POP INTO LEADERSHIP

Lead with Vision

### SGA

### WORKFORCE Wednesday

FEB. 18

11 AM-1 PM

Building Futures Together

### FROM SENTINELS TO SUCCESS

Bacot Gallery

FEB. 19

5-6 PM

ALUMNI IN ACTION

### LIVE OAK CONNECT

FEB. 23

Your pathway, your questions, your next steps — all in one stop.

### PERRY CONNECT

Your pathway, your questions, your next steps — all in one stop.

FEB. 26

### SENTINEL QUEST

Unlock Your Path Scavenger Hunt

A campus-wide, multi-day clue adventure

MARCH 14-10

### THE Hunt IS ON

### QUEST TO Success

The Clubs & Careers Showcase

03.11.26 | 11 AM-1 PM

### Dinner Theatre

Student Center  
Sentinel Upstage Players & NFC Foundation

MARCH 27-28 | 6-8 PM

### MADISON COUNTY Farm Tour

Partner: CWE/Agribusiness Department

NFC Off Campus Adventure

MARCH 20

### TRANSFER TABLE Talk

APRIL 8

11 AM-1 PM

STUDENT CENTER + LAKESIDE ROOM

Connect today. Transfer tomorrow.

### Sentinel Spirit Field Day:

Mascot Mayhem II  
The Showdown Returns

APRIL 15

11-5

TEAM SENTINEL VS TEAM DINO

### Freedom FRIDAYS

Civics Gets Fun: Freedom Trivia + Student Voice

APRIL 24 | 11 AM-1 PM  
LAKESIDE ROOM

UNITED STATES OF AMERICA

250

250 years in 250 days



# KELLY FITNESS & WELLNESS CENTER

## Wellness Wednesday

1

**JANUARY 7 | 11AM-1PM**

### STILLNESS & SLOWDOWN STUDIO

A PEACEFUL, QUIET, LOW-PRESSURE SPACE TO ALLOW STUDENTS TO RESET DURING THE FIRST WEEK OF THE SEMESTER.



2

**FEBRUARY 4 | 11AM-1PM**

### NO-PRESSURE CREATIVITY TABLE

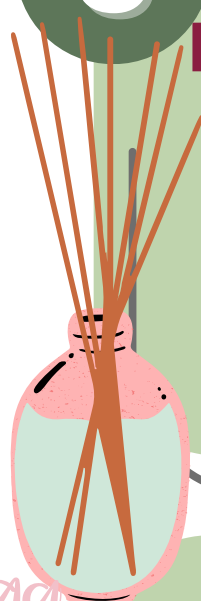
MARKERS • WASHI TAPE • INDEX CARDS • STICKERS  
CREATE, DOODLE, MAKE AN AFFIRMATION —  
NO RULES, NO PRESSURE.

3

**NOVEMBER 5 | 11AM-1PM**

### COMFORT CORNER: CALM YOUR SENSES

A SENSORY-FRIENDLY OASIS FOR  
MIDTERM STRESS RELIEF.



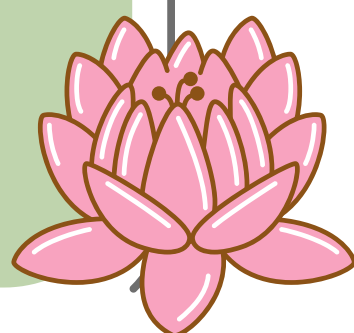
• breathe •

4

**APRIL 1 | 11AM-1PM**

### THE CALM BAR: PICK YOUR CALM

A SIMPLE, SOOTHING SELF-CARE POP-UP  
WHERE STUDENTS CHOOSE THE CALMING  
ITEM THAT FITS THEIR MOOD.



## Spring 2026 Kelly Fitness Center Student MEMBERSHIP-DRIVE

**BEGINNER, INTERMEDIATE,  
AND EXPERT READY-  
MADE FITNESS PLAN CARDS**







FROM CLASSROOM TO CAREER —  
RIGHT HERE AT NFC

# WORKFORCE WEDNESDAY

**FEB. 18 | 11 AM – 1 PM**

**Location: Student Center Quad**

**OPEN TO ALL NFC STUDENTS**

## What to Expect

- Sentinel Café serving up a classic hot plate lunch
- Interactive Workforce Wall: job postings + industry partners
- Mock interviews: quick, low-pressure practice
- CareerSource North Florida: job leads and workforce support
- Sentinel Shop: NFC merchandise available for purchase
- CWE, Career & Transfer, and Student Life spotlights



**NORTH FLORIDA  
COLLEGE**

**Join us for Workforce Wednesday, a campus experience highlighting how NFC supports students from education to employment.**



**SCAN • STEP • STAND OUT**

Collect Steps. Earn Perks. Students collect “Steps” through scans at events to earn gas cards, Sentinel Café and Sentinel Shop gift certificates.

**Hosted by Student Life, Career & Workforce Education and Career & Transfer.**